



HOLIDAY CAMP BROCHURE



Hatching Dragons
Help your baby *fly* through life



enquiries@hatching-dragons.com



020 3912 2900



@HatchingDragons



www.hatching-dragons.com



/HatchingDragonsNursery



@DragonNurseries

ABOUT US



After the birth of his son Nai, Cennydd John started to consider all those things that parents spend their nights and days worrying about: **what would Nai's future be like? How could he help? How was he going to juggle work and fatherhood?** All the usual questions...

Having lived, studied and worked overseas, he was looking for an education that would reflect the **international perspective** that was fundamental to him: global in outlook and ethos, and focussed on offering children real opportunities to **develop the skills and capabilities** that they would need to meet the challenges of the future head on.

Cenn incorporated Hatching Dragons in 2014 and expanded it in 2018, launching a second school in Westminster to meet the burgeoning demand for bilingual education in central London.

Nowadays, **Hatching Dragons is at the front of the bilingual education movement**. We work with some of the world's leading education research institutions on the bilingualism implications on child development. Furthermore, we are increasing our partnerships in China to **host travelling Chinese families who come to the UK** explicitly for their children to be educated in the Hatching Dragons method.

OUR AGE GROUPS



Dragon Flight
36+ MONTHS



Blue Dragons
22 - 36 MONTHS



Baby Dragons
12 - 24 MONTHS



Hatchlings
6 - 15 MONTHS

As every nursery provision in the U.K., we deliver the developmental outcomes established in **the Early Years Foundation Stage across 7 areas of learning.**

THE 3 PRIMES

Communication & Language
Physical Development
Personal, Social & Emotional
Development

THE 4 SPECIFICS

Literacy
Maths
Understanding the World
Expressive Arts & Design

What makes us different is how we achieve those to make your child **ready for school by age 5.**





OUR APPROACH TO EDUCATION



We believe in the importance of **values-based, thematic and experiential learning** for our children. Our annual plan is a cyclic approach to learning based on:

- 1. Values:** to provide an emotional focus for character-based learning; a moral thread that runs through all practice delivered in that month.
- 2. Experiences:** to recognise and celebrate diversity, our children learn through rich experiences based on a cultural programme that also provides the basis for our...
- 3. Themes:** to contextualise children's learning, whilst also providing structure to the bilingual framework. Children listen, understand and speak thematically aligned words, stories and songs throughout the course of the month.

The real beauty of what we do is our **bilingual immersion**. Bilingualism has **many significant cognitive benefits** on young minds:

-  *Enhances creativity;*
-  *Stimulates problem-solving skills;*
-  *Improves critical thinking;*
-  *Strengthens empathy and understanding.*

At Hatching Dragons, we consider that bilingual immersion isn't just about learning two languages. More importantly **children learn to see, comprehend and understand the world** from different perspectives. In our bilingual nurseries, we aim to not only meet the expectations set in the EYFS but far exceed them.



HOW DOES IT WORK?

Consistency

Each child is assigned **two key workers, Mandarin and English speakers**, who will only use their mother tongue to communicate with the child. As they mature through the school, their **linguistic development** will be pinned to and normalised in bilingual exposure.

Commitment

We offer **50 hours/week**, 51 weeks a year, and have a proven track record of achieving **high levels of fluency** with children who commit to that level. Although we are flexible with our hours, we advise having a **minimum of 25 hours/week** commitment to observe results.

OUR BILINGUAL METHOD

OUR LOCATIONS

WESTMINSTER



CITY OF LONDON



Hatching Dragons is constantly looking for new opportunities to expand and keep growing. Stay in touch to hear about any new locations!

www.hatching-dragons.com

enquiries@hatching-dragons.com

Hatching Dragons Ltd | Registered Company No. 08847709 | Ironmonger's Hall, Shaftesbury Place, Off Aldersgate Street, Barbican, London EC2Y 8AA

HATCHING DRAGONS WESTMINSTER

27 place nursery located in the heart of westminster, adjacent to the **Houses of Parliament** - both lords and commons, **Westminster Abbey**, Westminster school, the river Thames, **Big Ben** and St James' park and the ministries of state along whitehall. You cannot get better exposure to British culture, history and civilisation than here.



VICTORIA WATSON

Our Westminster Nursery Manager is a certified childcare specialist with 10 years of experience in early years education.



www.hatching-dragons.com

enquiries@hatching-dragons.com

Hatching Dragons Ltd | Registered Company No. 08847709 | Ironmonger's Hall, Shaftesbury Place, Off Aldersgate Street, Barbican, London EC2Y 8AA

HATCHING DRAGONS CITY



The city nursery has an **exciting programme** linked to the rich array of external amenities located nearby the nursery's central location, in **the heart of the city of London**. The setting is only minutes walk from **St. Paul's Cathedral, Barbican Centre, Barbican Highwalk, Museum of London** and other historical sites throughout the City and local schools, parks and more.



JOHANNA CLARK

Our City Nursery Manager is an EYFS teacher with degree in Education & Dance and over 25 years of experience in childcare.



www.hatching-dragons.com

enquiries@hatching-dragons.com

Hatching Dragons Ltd | Registered Company No. 08847709 | Ironmonger's Hall, Shaftesbury Place, Off Aldersgate Street, Barbican, London EC2Y 8AA

HOLIDAY CAMP - ACTIVITY SCHEDULE

体验营 - 活动计划

TIME	DAILY ROUTINE
8:30 - 9:00	Morning Registration & Breakfast
9:00 - 9:30	Circle Time
9:30 - 10:00	Literacy / Story / Rhyme Time
10:00 - 10:15	Tidy Up & Mid Morning Snack
10:15 - 11:00	Maths Arts Heuristic Sensory
11:00 - 12:00	Outing
12:00 - 13:00	Lunch & Nap / Quiet Time / Tidy Up
13:00 - 13:30	Circle Time
13:30 - 14:00	Maths Arts Heuristic Sensory
14:00 - 14:30	Literacy / Story / Rhyme Time
14:30 - 15:00	Tidy Up & Afternoon Snack
15:00 - 15:30	Talking Time / Jolly Phonics Music Time
15:30 - 16:00	Music Time Talking Time / Jolly Phonics
16:00 - 16:30	Physical Development
16:30 - 17:00	Afternoon Tea & Tidy Up
17:00 - 17:30	Sensory Play / Free Play
17:30 - 18:30	Sound Garden / Home Time

WEEKLY OUTING OPTIONS

出游选择

MONDAY

TUESDAY

WEDNESDAY

THURSDAY

FRIDAY

Hatching Dragons City

St Paul's
Cathedral

The Tate
Modern

Museum
of London

Barbican
Centre

Hatching Dragons Westminster

Westminster
Abbey

Houses of
Parliament

St James'
Park

Victoria
Embankment

Activity Schedule

www.hatching-dragons.com

enquiries@hatching-dragons.com

Hatching Dragons Ltd | Registered Company No. 08847709 | Ironmonger's Hall, Shaftesbury Place, Off Aldersgate Street, Barbican, London EC2Y 8AA

Food & Nutrition

Food is a central part of our broader pedagogy – we believe it is critical to teach children not only **healthy eating habits** but the enjoyment they can derive from the horticulture, preparation and cooking of that food.

We cook all of our food in house with our own chef, using organic meats and fresh vegetables, sustainably and locally sourced whenever we can from the markets and suppliers in our immediate vicinity. Being adjacent to Smithfield in London has its advantages!

Our **menus are seasonal and change weekly on a four weekly rotation** to ensure children get as much variety as possible. We use seasonal vegetables to ensure they can understand the changing nature of seasonal produce and the diets we should encourage children to support sustainable eating habits.

NUTRITION GUIDANCE

We follow the guidance of both the Government's Eat Well Strategy and the Nutrition Foundation's guidance and principles for both baby and then toddler nutrition. By doing so, we ensure that our children receive all the nutrition they need to keep active and attentive throughout the day. It is based on **the principle of 5532/day**, to provide children with all the nutrients they need to develop.

WHAT ABOUT BABIES?

We support mothers with their plans to breastfeed for as long as required but will **introduce solids into the babies' diet from 6 months** in line with the Nutrition Foundation's guidelines. Our baby menus focus on **blended smoothies and purees** of fresh vegetables and fruits to help them develop appreciation of new flavours and textures, whilst introducing new nutritional inputs that they need to help with their cognitive development.



WHAT WE PROVIDE

As part of our care for your child, and to ensure that hungry minds are fed to keep attention and activities rolling, we provide:

- **Breakfast** - as an option for those who request it
- **Snack time** – Mid morning and afternoon
- **Lunch** – a hearty two course meal to boost those energy reserves
- **Dinner** - another large meal to round off the day

IGNACIO NEIMEYER, NURSERY CHEF

I'm a fully qualified chef, having worked, most recently, as Consultant Head Chef at a nursery school in North West London and as a chef trainer at one of East London pre-eminent catering colleges. I've worked in professional kitchens too, both in Europe and South America, where I am from.



Example Menu

A = ALLERGENS WILL ALWAYS BE REPLACED WITH A SUITABLE ALTERNATIVE INGREDIENT IN LINE WITH FOOD STANDARDS GUIDELINES

	MONDAY	TUESDAY	WEDNESDAY	THURSDAY	FRIDAY
BREAKFAST	Porridge and red summer compote	Porridge and red summer compote	Porridge and red summer compote	Porridge and red summer compote	Porridge and red summer compote
MID MORNING SNACK	Melon and Apricot	Cream Cheese with Crackers	Cherry Tomato and Cucumbers	Strawberries and Bananas	Cheese and Cucumber
LUNCH	Open polenta beef sliced with pepper pitted black olives and cherry tomato (V) Open polenta sliced quorn with pitted olives and cherry	(V)Masala Frittata with Avocado Salsa and Pittas (A) Dairy Free Frittata Cherry Tomatoe, Sweet potatoes with avocado salsa and pitta	Queso Chicken Bake with sweet corn, black beans tomato green peppers served with Basmati Rice (V) Butternut Squash stuffed with Cheese, rice, beans	Roast Cod, Creamy Spinach and New Potatoes (A) Brocoli and Squash Baked, creamy spinach and New Potatoes	Chicken Stir Fry with rice noodles and beansprouts (A) Aubergines and Dhal, with rice noodles and bean sprouts
MID AFTERNOON SNACK	Yogurt and Fruit	Apples and bananas	Yogurt and Fruit	Oranges and bananas	Yogurt and Fruit
DINNER	Lemon Angel Hair with Cheese Broccoli and Peas (V) (A) Gluten Free pasta with vegan cheese Broccoli and Peas	Haddock Croquetas with orzo, sweet corn and green beans (A) Artichokes Hearts, Orzo sweetcorn and green beans	Meatballs boats with Cheese with sweet potato chips (A) Tuna Boats with vegan Cheese and sweet potato chips	Chicken/Quorn Penna Pasta Salad with Sun Dried Tomato, Black olives, red pepper with parmesan cheese/vegan cheese	Haloumi Veggie burger / burrito with Hummus, lettuce and tomatoe

DAILY NUTRITION: STARCHY FOODS, FRUIT & VEG, PROTEIN, DAIRY

RATE CARD

VALID FROM JANUARY 2019

DURATION	HOURS PER WEEK	PRICE
1 Week	15	£750
2 Weeks	14	£1400
3 Weeks	13	£2000
4 Weeks	12	£2400
4 Weeks +	11	£2200

PAYMENT TERMS

A non refundable deposit of 50% of the full programme value is required one month in advance of the programme starting.

Attendees are invited to register online via our website www.hatching-dragons.com: select the "register now" button, choose your required nursery site and choose "holiday camp".

Places are contingent on a full and accurate registration form being received from our online portal. Individual and Group bookings are available - please just get in touch directly.

The fees include all food provision and activities / educational programmes. Some outings may require additional surcharges.



Terms & Conditions

CONTEXT

1. Hatching Dragons offers holiday camp places to children who do not regularly attend our nurseries.
2. Hatching Dragons Holiday Camps are specially curated programmes of early years education for Chinese families who are travelling to the UK on holiday.

AVAILABILITY

3. is subject to the availability of places at the individual nurseries within the Hatching Dragons portfolio.
4. Agents must communicate in advance with potential numbers of holiday camp families to ascertain availability at each location by liaising directly with the centre via the email enquiries@hatching-dragons.com.

AGES

5. Hatching Dragons Holiday Camps offer care for children aged 6 months to 7 year old.

BOOKING & REGISTRATION

6. Agents must confirm numbers 3 months in advance of the holiday camp start date.
7. Agents must submit a list of names in advance, using the Hatching Dragons Group Attendee schedule to Hatching Dragons via enquiries@hatching-dragons.com.
8. Following confirmation of availability from the individual nursery, agents are responsible for registering each individual child, using the online registration form for the relevant nursery, ensuring full accuracy on the child's medical, dietary and allergy needs.
9. The agent warrants to assume all liability for the accuracy of this information and indemnifies Hatching Dragons from any inaccuracy submitted in the application process

PAYMENTS & DEPOSITS

10. As per the agency contract, clause 5.3.
11. All payments must be made via American Express, Mastercard or Visa.

SETTLING IN

12. Holiday camp children require three, two hour settling in sessions in the nursery in advance of the official programmes of care starting, in line with Hatching Dragons policy on Settling In.
13. Agents must ensure that parents adhere to this policy and attend settling in with their children either in person, or with a suitable representative who is familiar to the child who can assist with the child's integration into the nursery setting.

REQUIRED STATUTORY DOCUMENTS

14. Hatching Dragons will submit a letter of invitation on company headed paper to all registered families.
15. Agents are responsible for collating and submitting to Hatching Dragons all statutory documentation regarding the client child's care:
16. Birth Certificate
17. Copies of the visas for both parents and child
18. Full and accurate registration form

INCLUDED ELEMENTS

18. All food, drink and activities are included in the holiday camp fee. Nappies, medication, wipes and changes of clothes must be provided by the family.

SUPERIOR TERMS

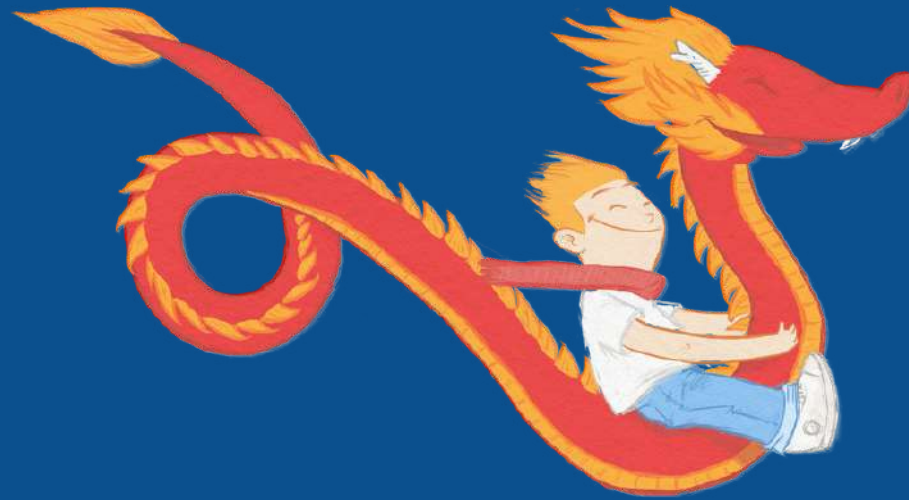
20. Holiday camp attendees and client are bound by the terms and conditions of service for all our clients as defined in the terms and conditions contract signed post registration.
21. As an Ofsted Registered Early Years provider, we abide by the statutory requirements set out in the EYFS Statutory Framework, the Children's Act and Childcare Act.
22. All operational policies and procedures of the underlying nurseries take precedence in regard to the safeguarding of children.
23. Agents are invited to review the policies and procedures of the individual nurseries in advance and as found on the nurseries' respective web pages.

EXCLUSIVITY

24. Hatching Dragons manages multiple agency relationships in China.
25. Holiday Camp bookings are taken on a first come, first served basis - no preference is given to any one particular agent.




See you soon!



Hatching Dragons
Help your baby fly through life

 enquiries@hatching-dragons.com

 020 3912 2900

 [@HatchingDragons](https://www.instagram.com/HatchingDragons)

 www.hatching-dragons.com

 [/HatchingDragonsCity](https://www.facebook.com/HatchingDragonsCity)

 [@DragonNurseries](https://www.twitter.com/DragonNurseries)